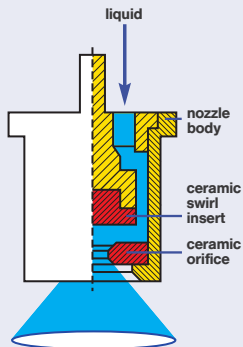
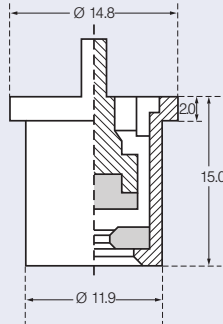


Hollow cone nozzles TR 80 Air-injector hollow cone nozzles ITR 80

Hollow cone nozzles TR



G 1496
G 1497
G 1498



Spray angle: 80°
Material : ceramic

Features

- Hollow cone nozzle with ceramic orifice and swirl insert
- Colour coding in accordance to ISO standard
- Nozzle sizes 005 to 05
- Pressure range 3.0 to 20.0 bar
- Flow rates see page 19
- Highly wear and chemical-resistant ceramic of orifice and swirl insert
- Easy maintenance, by easily removable nozzle insert
- Secured nozzle insert prevents falling out
- High degree of coverage thanks to fine/very fine droplet spectrum
- Optimal pressure range: 8.0 to 15.0 bar for space crops and special cultures
3.0 to 8.0 bar for broadcast spraying
- JKI approved (3.0 to 20.0 bar)

Range of application

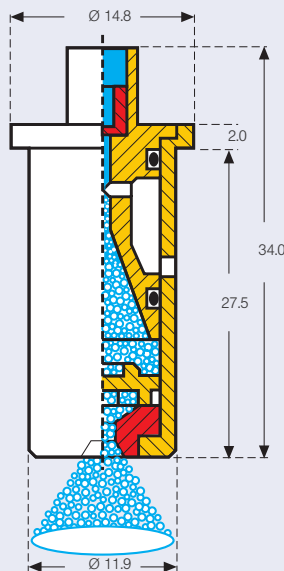
- Vineyards, orchards and speciality crops: Plant protectants, sprayers with and without air assistance, recycling and tunnel sprayers
- Horticulture: fungicides, insecticides, growth regulators, acaricides and in watering cars
- Broadcast spraying: fungicides, insecticides, growth regulators, boom sprayers with and without air assistance

Sample order

Type + spray angle + int'l nozzle size + material = order number
TR 80° 02 C (ceramic) = TR 80-02 C

Air-injector hollow cone nozzles ITR

Spray angle: 80°
Material : ceramic



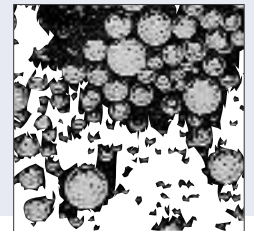
Features

- Air-injector hollow cone spray nozzle
- Nozzle sizes 01 to 02
- Pressure range 3.0 to 30.0 bar
- Flow rates – see page 19
- Highly wear and chemical-resistant ceramic
- One piece nozzle with easily removable injector
- Large flow cross section insensitive to blocking
- Droplet spectrum coarse to extremely coarse
- Colour-coding in accordance to ISO standard
- Optimal pressure range: 10.0 to 30.0 bar for space crops and special cultures
5.0 to 10.0 bar for broadcast spraying
- Extremely low drift potential

Range of application

- Vineyards, orchards and speciality crops: Plant protectants and growth regulators
- Broadcast spraying: Plant protectants

Aeration effect



Sample order

Type + spray angle + int'l nozzle size + material = order number
ITR 80° 02 C (ceramic) = ITR 80-02 C